



Wolpert Wilson® Instruments 574 Rockwell® Hardness Tester

Regular, Superficial and Twin scale testing

The Wilson Instruments 574 Rockwell testers are proven, durable, and reliable performers meeting a range of Rockwell testing applications. Available in Regular, Superficial or Twin scale models, the 574 provides a rugged industrial design, an all new, easy to use control panel, and built in USB for easy data transfer to MS® Excel® or other applications. With the best repeatability in its class, a high precision depth measurement system and proven performance, the 574 provides an affordable hardness testing solution.



Applications

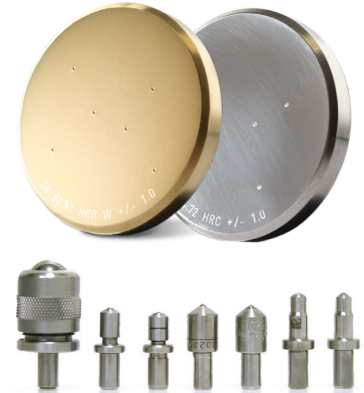
- Hardness from castings and forgings
- For flat and cylindrical work pieces
- Wide application within the automotive and aerospace industry
- Laboratory and workshop testing
- Sample testing or goods receipt testing
- Steels, non ferrous metals
- Cemented carbide, ceramics, stainless steels

Wolpert Wilson® Instruments 574 Rockwell® Hardness Tester

Regular, Superficial and Twin scale testing

Technical Specifications

Model Number	574 R	574 S	574 T
Hardness Scales	A, B, C, D, E, F, G, H, K, L, M, P, R, S, V	15N, 30N, 45N, 15T, 30T, 45T, 15W, 30W, 45W, 15X, 30X, 45X, 15Y, 30Y, 45Y	A, B, C, D, E, F, G, H, K, L, M, P, R, S, V, 15N, 30N, 45N, 15T, 30T, 45T, 15W, 30W, 45W, 15X, 30X, 45X, 15Y, 30Y, 45Y
Preliminary Load Kg (N)	10 (98.07)	3 (29.42)	3, 10 (29.42, 98.07)
Total Test Force Kg (N)	60, 100, 150 (588.4, 980.7, 1471)	15, 30, 45 (147.1, 294.2, 441.3)	15, 30, 45, 60, 100, 150 (147.1, 294.2, 441.3, 588.4, 980.7, 1471)
Test Force Application Type	Calibrated Spring (Minor Load), Dead weight stack (Major load)		
Dwell Time	Minor Dwell Time Major Dwell Time Elastic Recovery	0.1 to 50.0 1.0 to 50.0 0.2 to 50.0	
Machine Dimensions	Overall height Overall width Overall depth	934 mm (36.83 in.) 292 mm (11.53 in.) 566 mm (22.3 in.)	
Vertical Testing Capacity	289 mm (11.43 in.) accessories may decrease available capacity		
Throat Depth	175 mm (6.93 in.) at the top, 155 mm (6.13 in.) at the bottom		
Maximum specimen weight	100 Kg (220 lb)		
Machine Weight	75 Kg (165 lb)		
Specimen Illumination	Adjustable LED		
Standards Compliant	ASTM E18, ASTM D785, ASTM B294, ISO 6508, JIS Z2245, GB/T 230		
Test Cycle Type	Motorized (Manual preload, auto trip, auto brake)		
Resolution	.1 or .01 HR (adjustable)		
Statistics	Number of Tests, Mean, Standard Deviation, Maximum, Minimum Range, CP, CPK, Individual test hardness numbers (displayed in a scrolling vertical list)		
Conversion	ASTM E140, ISO 18265, DIN 50150, GB T1172, convert up to four scales simultaneously		
Data Output	USB and RS-232		
Data Memory	999 per each hardness scale		
Languages	English, German, Spanish, French, Italian, Chinese (Simplified)		
Display	LCD digital panel, backlight, 320 x 240 resolution		
Power Supply	100 - 240V AC 60/50 Hz		



Test blocks and indenters

Wilson Instruments offers a NVLAP 17025 accredited Rockwell test blocks, diamond indenters and ball penetrators



Accessories

Standard

- 63 mm (2.5") flat anvil
- 1.5875mm (1/16") carbide ball indenter with four extra carbide balls
- CD with operating instructions, and CE certificates
- Certificate of calibration
- Power Cord

Accessory options

- Indenters and blocks
- Regular | Superficial | Twin Scale kits
- Clamping Adapter
- Wide range of anvils, fixtures and test tables

Please ask for a full accessories catalog



Wolpert Wilson Instruments
Europe • europe.sales@wolpertwilson.com
Asia • asia.sales@wolpertwilson.com
www.wolpertwilson.com

We are Local to You



Wolpert Wilson Instruments is an Instron® ITW Company