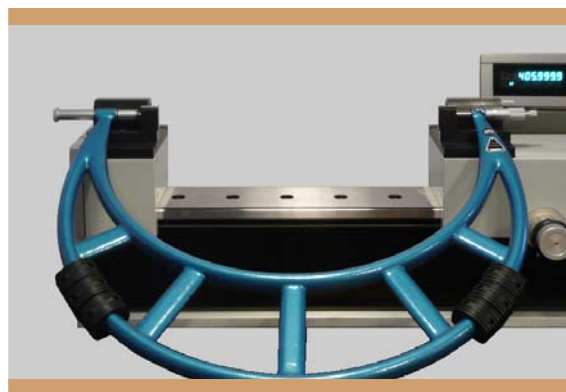
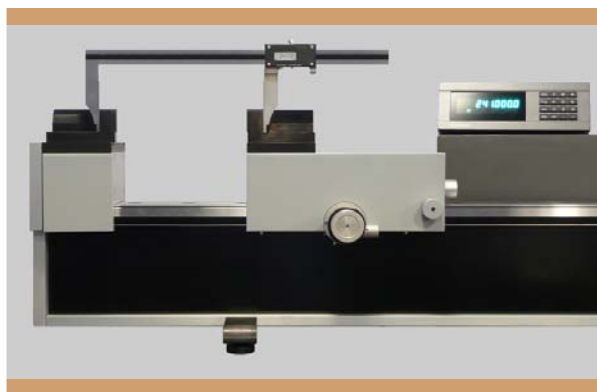
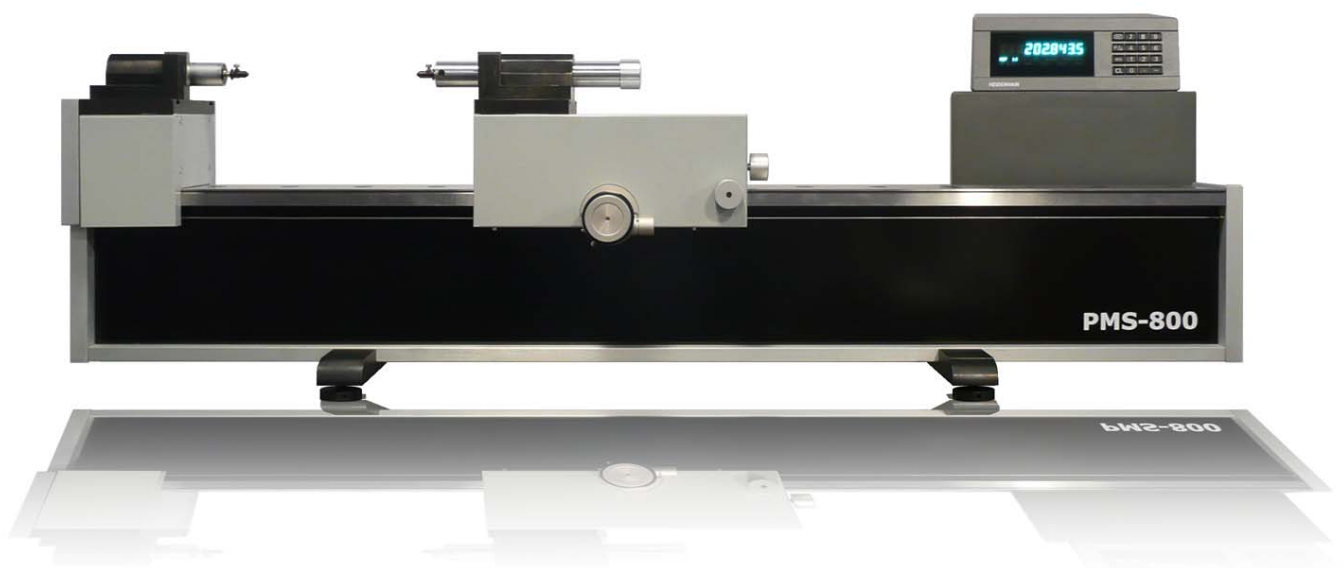


PMS 800 - Horizontal

Instrument Setting & Length measurement

» *accurate measurement for workshop and laboratory* «



MICROREP

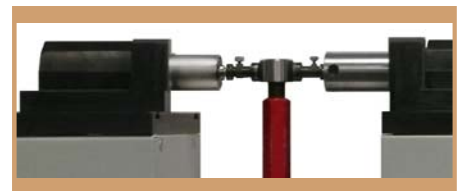
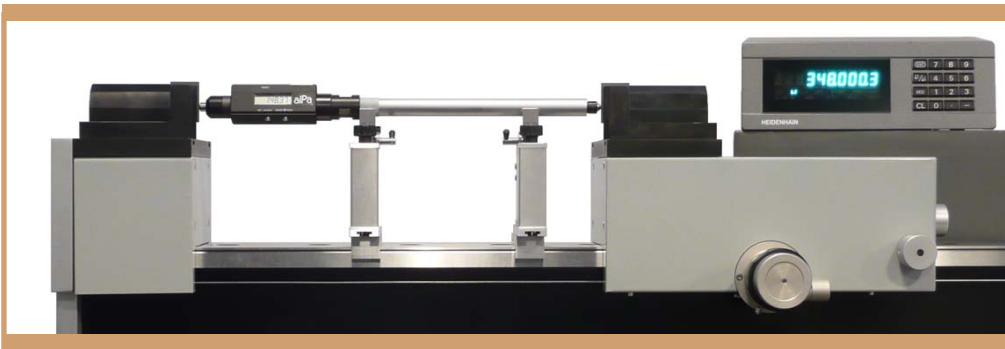
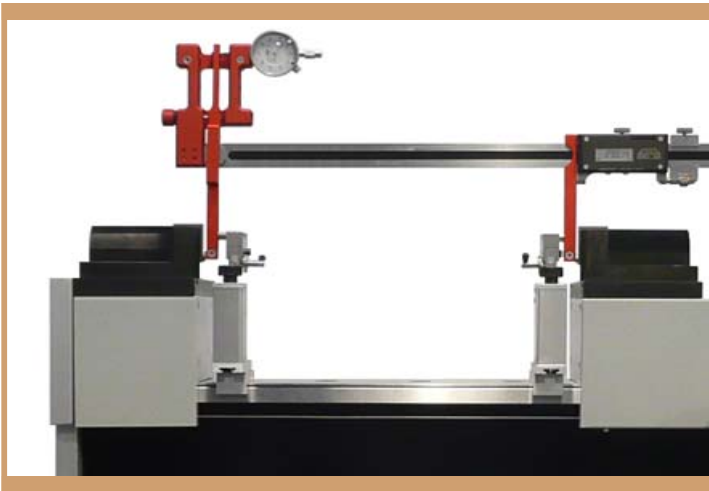
Applications

Instrument Setting:

- External micrometer
- Internal micrometer
- Inside Caliper
- Outside Caliper
- Bore gage
- Depth gage

Gage Calibration:

- Plain plug
- Thread plug
- Plain ring
- Thread ring
- Snap gage
- Indicator



Specifications

Resolution : 0.1 μm

Accuracy : $0.8 + \frac{L(\text{mm})}{1000} \mu\text{m}$

Measurement Range : 800 mm | external micrometer up to 1000 mm with extension

specifications and equipment subject to change without notice